

Sign Found in Movie A Quiet Place Part 2

Ni Nyoman Karina Yola¹ | I Ketut Subagia¹

1. Fakultas Sastra, Universitas Warmadewa

Correspondence address to:
Ni Nyoman Karina Yola, Fakultas Sastra, Universitas Warmadewa

Email address:
karinayolaa@gmail.com

Abstract. The title of this research is "Sign Found in Movie A Quiet Place Part 2". This research aims to find the types of signs and meanings in the movie A Quiet Place Part 2. The data of this research is found from scenes, objects, and expressions in the movie. The qualitative-descriptive method is used in this research. The method used to collect data is the observation method. After all the data is collected, it is then identified based on its type and meaning. The main theory used to solve the problem is the theory proposed by Pierce in the book "Semiotics the Basics" by Chandler and the supporting theory used is Leech's theory in the book "The Study of Meaning". The results of this study show that there are 15 (fifteen) signs found in the movie A Quiet Place Part 2, namely 5 (five) icons, 5 (five) indexes, and 5 (five) symbols. The meaning is analyzed based on Pierce's triadic sign model, which consists of representamen, object, and interpretant.

Keywords: semiotics; sign; meanings



This article published by Fakultas Sastra, Universitas Warmadewa is open access under the term of the Creative Common, CC-BY-SA license

1. Introduction

Sign is one topic in semiotics. According to Chandler (2007), In a semiotic sense, words, images, sounds, odours, flavours, acts, or objects can all be Signs, but such things have no intrinsic meaning and become Signs only after being given meaning. The study of semiotics goes on how people first all interpreted a Sign, and how cultural or personal experiences are utilized to understand a Sign. Signs play a fundamental role in human life and communication. In language, Signs enable individuals to convey thoughts, ideas, and emotions to one another. In daily life, people often find Signs anywhere and in any activity. Signs are vital for social interactions, enabling individuals to express their intentions, share information, and engage in various forms of social exchange. Non-verbal Signs, such as facial expressions and gestures, are particularly important in interpersonal communication. Signs are an essential part of public spaces, such as streets, buildings, and transportation hubs, as they help people navigate, find their way, and stay safe. They can also provide important information about services, events, and attractions in the area.

In not only public areas, Signs are also often found in various entertainment media. People sometimes need entertainment media for relaxation or just to take a break from activities that are a little weary. Many entertainment media can entertain a person such as movies, music, books, and others. One of the entertainment media that is often done by people is watching a movie. According to Rubi (2023), "Movies have been an effective medium for artistic expression, entertainment, and storytelling". Nowadays, movies can be watched not only in theaters but also on many legal streaming platforms can be used to watch a movie such as Viu, Disney+ Hotstar, Netflix, WeTV, and so on. Almost everyone has watched a movie. A movie is one of the media that has a big impact on its audience because many things can be learned from the movie, especially visual communication by watching movies. Visual communication is the use of visual elements to convey ideas and information, one of which is a Sign. In essence, Signs are pervasive in human life, influencing how individuals communicate, navigate the world, interpret experiences, and engage with culture. Understanding the role and meaning of Signs is crucial for effective communication and the development of shared cultural, social, and personal meanings.

In the movie, there are several examples of Signs such as a picture of a person as an Icon, footprints as an Index, and the national flag as a Symbol. The explanation is that the image of a person is an Icon because the image is a Signifier that Signifies a person as a Signified. Footprints are an example of an Index because the definition of an Index is a Signifier that is directly related to the Signified, so footprints are a Sign that there are humans passing through the place. The last is the national flag, the national flag is a Symbol when the flag as a Signifier does not resemble the country as Signified, but rather is based on agreement on the kind or color of the flag as a Symbol of the country. In movies, there are many Signs that can be found but the problem is the meaning of the Signs contained in the movie is not widely known by people. Therefore, this topic is important to be analyzed. This research uses some previous research. Several previous research have analyzed about Signs. Some of them can be seen below.

Rahmaton et al. (2023) Universitas Syiah Kuala, Banda entitled *A Semiotic Analysis of the Hafalan Shalat Delisa Movie*. This research successfully found Icon, Index and Symbol with using Peirce's Semiotic Theory. This research used a descriptive-qualitative method to gather data and was categorized according to the different kinds of Signs found. In this research, Icons, Indexes and Symbols are found in the expressions of the actors, the scenes of the actors, and the objects used in the movie. The result of this research consisted of thirteen Signs, four of which were Icons, four of which were Indexes, and five of which were Symbols.

The second previous research comes from Amalia (2022) in Universitas Islam Negeri Sunan Ampel Surabaya. This research mentioned Icon, Index, and Symbol with a research entitled *Semiotics analysis of Disney movie posters*. This research takes data from movie posters from Walt Disney and uses Pierce's theory. The descriptive-qualitative method is used in this research. In this

research, Icons, Indexes, and Symbols were found in the form of images on a poster and successfully found 29 Signs on four Disney movie posters. There are 11 Icon Signs, 5 Index Signs, and 13 Symbol Signs.

Another previous research from Wiyogo & Kumala (2023). This research used formal and material objects. Charles Sanders Peirce the theory is the formal object. The novel *Night on the Galactic Railroad* by Miyazawa Kenji is the material object. Wiyogo & Kumala (2023) mentioned about Icon, Index, and Symbol found in their research entitled *Semiotics Analysis On The Novel Night On The Galactic Railroad By Miyazawa Kenji*. The research uses theory by Peirce. In this research, Icons, Indexes and Symbols are found in conversations and sentences in the novel. This research successfully determined that there are twenty-four Signs. Seventeen Indexes, five Symbols, and two Icons. Based on the analytical procedure. This research finds that Indexes are the most common indications in the novel.

From the above research, many research studies show that the theory from Charles Sanders Pierce is successful in revealing the types of Sign inside the movie, movie poster, and novel. The similarity between this research and previous research is that both use Pierce's theory in determining types and also use descriptive methods in analyzing data. This research is different from previous studies. The previous research used Indonesian movie, novel, and movie posters, but this research uses English horror movie. It means that the different of this research and previous research is the data source of them. This research uses an English horror movie with less dialog as a data source entitled *A Quiet Place Part 2*. The Icon, Index and Symbol data were found in the form of screenshots of a scene, the surrounding environment, and conversations in the movie. The specific aim of this research is to learn more about Sign such as what types of Signs are used and find the meaning of Icons, Indexes, and Symbols in the movie *A Quiet Place Part 2*.

A Quiet Place Part 2 is a movie about a family that is forced to live in silence. In this movie, the actors often communicate by using gestures and Sign language to communicate. Sometimes they can speak but only if there is a soundproof place or a place that has natural sounds such as dripping water and waterfalls. This movie is a sequel to *A Quiet Place*, which was released in 2018. The storyline of *A Quiet Place Part 2* continues what happened in the previous movie, which is after the Abbott family discovered the weakness of blind monsters who are sensitive to sound. Evelyn, who is the leader of the Abbott Family, decides to get out of the hiding place. This family goes looking for another place to survive. This movie is a good medium for learning about Signs in semiotics. The monster in *A Quiet Place* uses a lot of Sign language to communicate because the monster is sensitive to sound. Many scenes in this movie can be seen as a Sign model by Charles Sanders Pierce.

2. Method

The source of data or Sign was taken from the Movie. This study uses a horror movie entitled *A Quiet Place Part 2*. Data collection is carried out by using the observation method. The category of qualitative data consists of audiovisual and digital material (including social media material) Creswell & Creswell (2018). Photographs, artwork, videotapes, email correspondence, text messages, social media posts, and any kind of sound can all be considered forms of this data. The first stage is to observe the movie scenes and images in the Movie. The second stage is to take screenshots of the Signs in the movie. Finally, it is recorded on paper after being classified based on the type of Sign and its meaning. Data analysis uses the descriptive qualitative method by Creswell & Creswell (2018) to complete this research. Two steps are involved in the data analysis procedure. Initially, the gathered data was categorized according to the different kinds of signs found in the relevant theory. Secondly, the information was classified according to each type's meaning and provided with a descriptive description.

3. Result and Discussion

The next step is to analyze the types of Signs and meanings contained in the movie *A Quiet Place Part 2*. Signs have three types: Icons, Indexes, and Symbols. Icon, Index, and Symbol are three types of Signs based on the relationship between Sign and object according to Peirce's semiotic theory. The meaning contained in the movie *A Quiet Place Part 2* is analyzed using Leech's theory of seven types of meaning.

Icon

Data 1

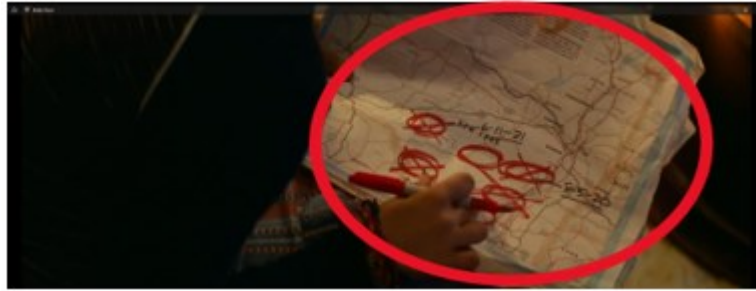


Figure 1. Map of New York

Timestamp 16:14

The first Icon shows a map of the area marked with circles and crosses. In this movie, before the Abbott family leaves their old home, Regan (the eldest child in the Abbott family) goes to the room where her father is researching ways to deal with monsters. Regan finds a map that has been marked with red circles, then Regan opens the map and looks for a safe route for her family. She finds a large map of New York City on the wall and uses it to plan their journey through the dangerous city. The map helps them avoid potentially dangerous areas and find safer paths in the face of the threat of sound-sensitive creatures.

Maps are graphical representations of a represented geographic area. They use Symbols, lines, colors, and text to depict information about the topography, roads, rivers, political borders, and various other features of a region. Circles and crosses are often used as symbols in a variety of contexts, including maps or area markings. Circle marks can be used to mark areas or locations that have not yet been visited or explored. This can be used in maps or trip planning applications to indicate areas that have not been explored by someone. Crosses are often used to indicate that an area or location is prohibited or should not be visited. This can include dangerous areas, restricted places, or areas that are not accessible to the general public.

The first Icon is a Map of New York. The map is an icon because represents physical or geographical objects in the real world in a visually similar way. This sign shows a visual description of the map, which includes a description of the geographical area or information about the location and distance between places (R), with the geographical area depicted by the map which is the city of New York (O). The Representamen (R) and Object (O) have a relationship and produce an interpretant (I) which is the location or geographical information represented by the map, as well as the possibility of travel planning or navigation based on this information. Maps have conceptual meanings associated with visual representations of geographical areas or spatial information. The conceptual meaning of "map" is a graphical representation or visual image of a geographic area or space used for navigation, exploration, or understanding. Maps are conceptually abstract representations of the real world, which include information about the location, direction, distance, and physical or political features of an area. Maps provide a way for people to understand and utilize the space around them, and assist in decision-making and planning.

Data 2

**Figure 2.** Painting of a child.

Timestamp 28:26

The second Icon is a painting of a child. In this movie, the painting of a boy was seen when the Abbott family arrived at Emmett's hiding place (a friend of the Abbott family). The painting of the boy is Emmett's son. Drawings provide the only way to fix memories in a tangible form. His drawing of his son is a means of preservation, a way to ensure his deceased son lives on in his memory without fading over time. There are many paintings of the boy, some on the table and some on the wall. Icons commonly used to denote paintings of a child can be pencil or brush drawings with strokes that look rough or imperfect. The use of a painting of a child's face shows a memento of a father depicting a child he loved. The painting of a deceased child can be a very powerful Sign of grief, memory, and loss that are the main focus in this movie and highlights the themes of family and loss that are the main focus in this movie.

The second Icon is a painting of a child. A painting of a child can be considered an icon because it has a semiotic relationship with the object it represents through visual similarity. Face painting attempts to capture the physical features and expressions of the painted individual by using lines, colors, and textures that create similarities with the actual face. The second Icon shows the child's painting on the wall (R), with a son who has passed away (O). The Representamen (R) and Object (O) have a relationship and produce feelings of empathy, sadness, or reflection on the death of the child (I). The meaning contained in the painting of a child is affective meaning, relating to the feelings or emotions expressed or evoked by the painting. A father paints his son's face because of the love and longing he feels.

Data 3

**Figure 3.** Rocket toys.

Timestamp 1:52

The third Icon is a toy rocket. In this movie, rocket toys are found in a convenience store. Flashback to the movie *A Quiet Place Part 1*, where it was told that Abbott's youngest son was very fond of rocket toys. When the area was destroyed, Abbott and his family returned to visit this convenience store and at that time his youngest son was very interested in this rocket toy. Rockets are Symbolic of the desire to escape from difficult circumstances, as well as the hope of finding a safer place or even a new world. It also reflects the creative and imaginative nature of a child, who

even during stressful situations, still has big dreams and hopes.

Rocket toys are icons because they represent an actual object (i.e., a rocket) in a way that is similar or similar to the object itself. Rocket toys use shapes, colors, and other features that create visual similarities to the actual rocket. The Sign shows the relationship of a rocket-shaped toy (R), with a vehicle or machine designed to travel outside the atmosphere, namely a rocket (O). Representamen (R) and Object (O) have a relationship and produce an interpretant (I), in the form of a sense of admiration for space technology and imagination about adventures in space. The third Icon has a connotative meaning, rocket toys can relate to speed, exploration, or excitement, as rockets are often associated with fast and exciting space travel.

Data 4



Figure 4. Smile sticker emoticon.

Timestamp 1:59

The fourth Icon is a sign that shows the smile logo. The smiling logo in this movie is attached to the glass cabinet of the convenience store visited by Abbott. At that very moment, Abbott received news that there would be a disaster. Abbott did not know for sure what the disaster was, so Abbott hurried to leave the convenience store. Emoticons are Icons because they are graphic representations used to convey emotion, expression, or nuance in text. Emoticons usually consist of characters such as letters, numbers, and Symbols arranged in such a way as to form a smiley, sad, angry, or other expression. Emoticons can help communicate the feeling or tone of a text message that may be difficult to capture with words alone. Smile Icons are commonly used as Symbolic representations of happy or friendly facial expressions.

The smile emoticon represents a happy facial expression so it can be considered an icon because it has a semiotic relationship with the actual facial expression. The Icon displays a picture of a smile (R), with a smiling expression or positive feelings that want to be conveyed to others (O). Representamen (R) and Object (O) have a relationship and produce an interpretant (I), stickers want to convey messages that are positive or friendly. A smile emoticon Icon has a Sign that has a connotative meaning that a smile can also be a sign of a friendly and welcoming attitude. It can create a pleasant and comfortable atmosphere in social interactions. In this movie, Emoticon's smile can be considered a Symbol of fortitude and courage to keep smiling during darkness and despair. This message may also be meant to encourage others who see it, that they are not alone in their struggle against the threat.

Data 5

**Figure 5.** Ice cream Icon.

Timestamp 2:19

The fifth Icon is a sign that shows the ice cream logo. In this movie, there is a scene of the father rushing to the place where the boys will compete in baseball. This ice cream Icon is in the rows of shops that the father passes. The ice cream Icon can be used in graphic design, advertising, or branding to represent products or services related to ice cream. Logo designs for ice cream products may vary depending on the brand, image, and values to be conveyed.

The fifth Icon is an ice cream. This image includes icons Because the image of the ice cream closely reflects the color, texture, and shape of real ice cream. This Icon consists of an image or design depicting ice cream (R), with ice cream products sold in the shop (O). The Representamen (R) and Object (O) have a relationship and the ice cream logo in the shop can be understood as a sign that directs a specific interpretant (I) to the customer, namely the understanding that the shop sells ice cream. This fifth Icon is a sign that has a conceptual meaning that the shop sells ice cream. The Sign reflects the concept of ice cream in the form of a cone, which is one of the popular forms of ice cream. Conceptually, this Sign communicates to customers that the store sells a wide variety of delicious and fresh ice cream. The ice cream Icon can also reflect the fun, joy, and freshness associated with enjoying ice cream, which can attract customers to buy the product.

Index

Data 6

**Figure 6.** Smoke from a burning house.

Timestamp 13:11

The first Index is a house that is on fire and emits smoke. In this movie, the burning house happened because the monster came to the Abbott family's house and destroyed it. The Abbott family had to leave immediately and find a safer shelter from the monsters. This scene adds tension to the story and shows how fragile their security is in a world full of dangers. A burnt house is also a sign of destruction and despair, as well as a temporary refuge. The burning House scene is the focal point where the main characters gather to seek temporary refuge from monsters

that hunt with sensitive hearing.

Smoke from a burning house is an index. Smoke from a burning house is a sign that indicates a fire because of its direct association with the phenomenon. When people see smoke, it must be associated with a fire because usually such smoke arises from the presence of a burning fire. This Sign shows smoke on the house (R), representing the object (O) of the smoke coming from the burning house. The representamen (R) and object (O) have a marked relationship resulting in the interpretant (I); there was a disaster that struck in the area that made the house burn which caused smoke so it has a reflective meaning. The "fire house" can be interpreted as an association with an emergency, hazard, or rescue activity. Burning house scenes are often used in narratives to convey various messages or emotions, such as destruction, loss, or drastic changes in a character's life.

Data 7

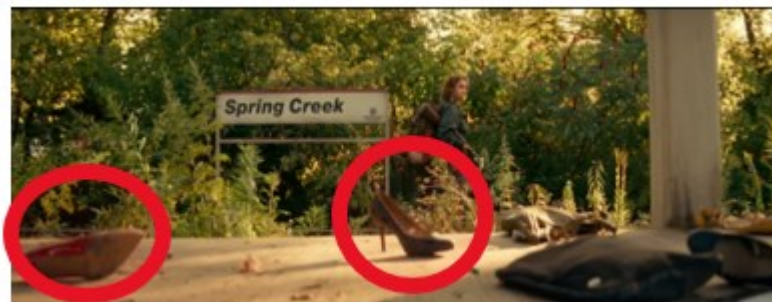


Figure 7. High heels.

Timestamp 38:41

The second Index is the high heels left behind. On the way to the place where the music "Beyond the Sea" originated, Regan Abbott passed a place called Spring Creek. As she passed by the place, she saw many high heels just lying there. The presence of the shoes lying there can be considered as a symbolic representation of the character's life steps or journey. In this movie, heels are considered dangerous because they can produce quite a loud sound, and this sound can attract the attention of hunting monsters with very sensitive hearing. Therefore, the characters in the movie have to be careful and try not to make any noise that risks attracting the monster's attention. They often walk without shoes or wear shoes that do not have heels to reduce the risk of making risky sounds.

High heels can be considered an index because of their relationship with humans, especially women. The presence of many high heels in that place indicates that there were once humans in that place. In this data, the Sign shows the presence of women's shoes (R), which Symbolizes human presence or Signs of human life around the area (O). The representation (R) and object (O) have a relationship with the Sign, resulting in the interpretant (I), which is that in the past there was a human presence and also awareness of the dangers that occurred in the area. This Sign has a conceptual meaning, the high heels that are lying around show that there are traces of humans who once lived in the area, namely Spring Creek.

Data 8

**Figure 8.** Car tire marks on the road.

Timestamp 8:58

The third Index is the presence of brake marks on the asphalt. This is the moment when the monster appeared and attacked the city. Everyone was trying to save themselves from the monster's attack. Due to the chaotic situation, the people in their vehicles panicked and found it difficult to control their vehicles to avoid collisions. Because of that the vehicles they were driving accelerated and also braked suddenly to avoid accidents and save themselves from the monster's pursuit.

The brake marks on the road are an index because it shows a causal relationship between the car tire marks on the asphalt and the sudden braking of the vehicle. The Sign that shows a car avoiding a collision and braking suddenly (R), represents the object (O) of a tire mark on the asphalt of a very clear road. The representamen (R) and object (O) have a relationship that results in the interpretant (I), which is the awareness of the existence of danger or threat that may be around them.

This Index has a conceptual meaning. The Sign of tire brakes on asphalt is a visual representation of the Signs of braking that occur on the road surface due to the friction of the tires with the asphalt when the car brakes. Conceptually, they indicate strong braking activity, which can indicate a situation where a vehicle is moving at high speed and then brakes suddenly or strongly. Tire brake marks on the asphalt can also reflect concepts of speed, control, or even danger. At the same time, the marks also communicate to other drivers that the vehicle previously braked, which can serve as a warning of a dangerous situation on the road.

Data 9

**Figure 9.** Broken windshield

Timestamp 8:40

The fourth Index is the broken windshield of the car. This scene occurs when the monsters first arrive and start attacking the town. When the monster attacked, everyone ran and headed to their respective vehicles to save themselves. In the chaotic situation, everyone is unable to control their vehicles, and at that very moment the monster attacks the car driven by the Abbott family. The monster that attacked the car had sharp nails that broke the windshield of the Abbott family's car.

The broken windshield is an index because it shows the causal relationship between the broken windshield and the monster that attacked. This Index shows a monster attack (R) with the appearance of a broken car glass (O). The representamen (R) and object (O) have a relationship that can lead to the interpretant (I), which is a physical Sign of the presence of a scary monster. This Index has several meanings, namely conceptual meaning where the car has been attacked by monsters.

Data 10



Figure 10. Feeling of fear.

Timestamp 4:50

The fifth Index is the feeling of fear. The incident began when one of the Abbott children participated in a baseball competition in a field. The scene depicts the fear and doubt Marcus feels while playing baseball in the baseball competition. Marcus felt tense and insecure, but he tried to overcome it to help his team. His wide-open eyes exude tension, while the wrinkles on his forehead create an image of deep anxiety. His tense, rigid face reflects a deep-seated discomfort. Her body seems to twist or freeze as if responding to a basic instinct to protect herself from situations she finds frightening. Subtle tremors shake his body, and trembling hands are an obvious physical Sign of the fear he feels. His voice trembles when he speaks, creating a tone that reflects deep inner anxiety.

The feeling of fear is an index because it shows the causal relationship between the feeling of fear and the monster that attacked. This Index shows the feeling of fear of a person (R) the gesture of a child standing with a baseball bat and bending his arms across his chest (O). The representamen (R) and object (O) have a relationship that can lead to the interpretant (I) which is the tension during the race felt by Marcus. This Index has a conceptual meaning, that a child is experiencing a feeling of fear from the events he experienced, fear during the race reflects the complexity of the character's emotions and motivations in dealing with situations that require them to bring their best performance.

Symbol

Data 11

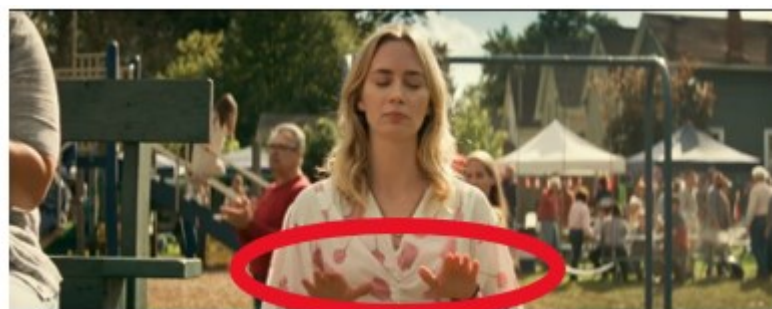


Figure 11. Symbol of the hand below the chest and swinging downward.

Timestamp 4:52

The first Symbol is the Hand Under Chest and Swinging Downward. This scene begins when Abbott's wife is watching her son who is competing in baseball. At that moment, Marcus looks scared and hesitant to hit the ball. Because of the feelings of fear and doubt that Marcus felt, he turned to his mother with a look that showed his fear. His mother also gave a gesture, which is a Symbol of a hand under the chest and swinging downward as a gesture to calm and reassure her son. as a gesture to calm and reassure her son who was racing to hit the ball.

In this sign, the "calm down" gesture can be considered a symbol because it has a conventional meaning or cultural agreement that indicates an attempt to calm oneself or others. This Symbol shows a hand swinging down (R) which Symbolizes a situation that must be done (O). The representamen (R) and object (O) relate and produce an interpretant (I) understanding or responding to the given. This Sign has a social meaning where the action of a person to be calm. This Sign also has a connotative meaning, referring to additional associations or deeper meanings associated with the Sign language "calm", such as patience, self-control, or calmness in dealing with difficult situations.

Data 12

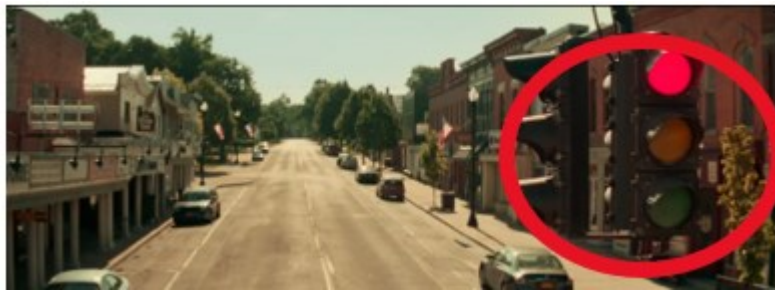


Figure 12. The traffic light.

Timestamp 0:58

The second Symbol is a traffic light. Traffic lights are devices used to regulate the flow of traffic at road intersections or specific points. They consist of colored lights that are illuminated alternately to give instructions to motorists on when to stop, get ready, or proceed. Traffic lights generally consist of three main colors:

Red: This is the Symbol for stopping. A red light indicates that the motorist must stop and should not proceed.

Yellow: This is the Symbol for getting ready. The yellow light usually comes on before the green light to warn motorists that the light will soon turn red.

Green: This is the Symbol for proceeding. A green light indicates that the motorist is allowed to proceed.

This traffic light Sign appears when the movie has just begun, which depicts the state of the city before the monster attacks. In this scene, the city looks neat with cars lined up on the side of the road. After that, one car was seen passing through the road, and then parking the car on the side of the road. The car is Abbot's car who wants to go to the convenience store.

Traffic lights can be considered symbols because they represent a larger meaning or instruction. The red, yellow, and green lights on a traffic light are not just random colors but have socially agreed-upon meanings. The second symbol is a sign indicating the presence of a red traffic light (R) instruction for motorists (O). The representamen (R) and object (O) relate and produce the interpretant (I) which is understanding or responding to the Sign. For example, a driver who sees a red light will interpret the Sign as a Signal to stop. The Symbol has social meaning, referring to the meaning associated with the social or cultural context in which the traffic light is used, such as traffic norms or the legal system that regulates the use of traffic lights. The Symbol also has

conceptual meaning, Traffic lights carry a conceptual meaning of safety, as their primary function is to reduce the risk of accidents by regulating the flow of traffic.

Data 13



Figure 13. STOP Sign.

Timestamp 19:25

The third Symbol is the "STOP" Sign near the railroad tracks. The "STOP" Symbol commonly found on traffic Signs has a clear meaning as an order to stop the movement of vehicles or pedestrians. It is a very important Sign and is universal in many countries. Command to Stop: The "STOP" Symbol gives direct instruction to motorists or pedestrians to stop their movement. It is applied at road intersections, pedestrian crossings, or any other place where a stop is required.

In this scene, the Abbott family made it to Emmett's place after a journey full of dangers and obstacles. This "STOP" Sign is seen before arriving at Emmett's place. After escaping from their destroyed home, they travel to a nearby small town where they meet Emmett, a former neighbor who is grieving the loss of his family. With determination and cooperation, they make it to a place Emmett considers safe, an abandoned steel mill where Emmett has been living since losing his family. This place becomes a temporary refuge for the Abbott family in their quest to survive in a world filled with threats.

The "stop" sign can be considered a symbol because it represents an instruction or command to stop, and the relationship between the symbol and the instruction is conventional. This Symbol shows the "STOP" Sign (R), Symbolizing the object (O) of instruction or command to stop. The representative (R) and object (O) have a relationship and produce the interpretant (I) which is the action of the driver to stop the vehicle when they see the Sign. This Symbol has a social meaning, the "STOP" Sign involves the social or cultural context in which the Sign is used. This includes the social norms that govern road behavior and the importance of order and safety in traffic.

Data 14

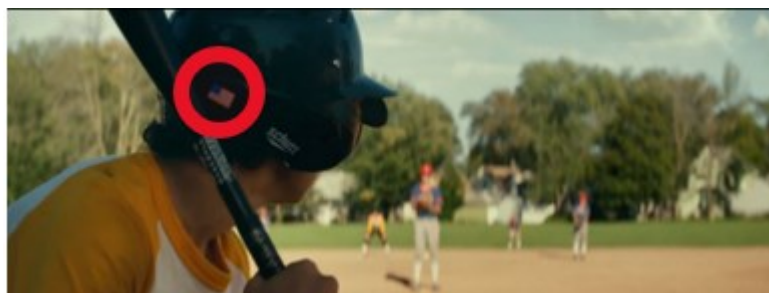


Figure 14. United States flag on the helmet.

Timestamp 5:10

The fourth Symbol is the presence of an American flag on the helmet used by Marcus. The flag on a sports helmet is a prominent element and often serves a specific purpose during certain sporting activities. The flag on a sports helmet is not just a functional attribute; it is an embodiment of the spirit of competition, patriotism, and pride that is carried throughout the athlete's journey in the world of sports. An atmosphere of fervor and excitement is created around the flag-waving helmet, inspiring spectators and fellow athletes alike. This flag Symbol was seen when Marcus took part in a baseball competition. When he was about to hit the ball, Marcus' helmet had an American flag on it.

A flag is a symbol because it represents a particular group or country, and the relationship between the flag and the entity it represents is conventional. In this Symbol, the United States flag is seen consisting of a pattern of stars and red and white stripes (R), which represents the country of the United States itself (O). The representamen (R) and object (O) have a relationship that produces the interpretant (I), which is a sense of respect, patriotism, or national identity that arises when someone sees or interacts with the flag. This Symbol has conceptual meaning, because flags have additional properties such as patriotism, national identity, or loyalty to an entity or ideology.

Data 15



Figure 15. First aid Symbol.

Timestamp 41:32

The fifth Symbol is the first aid Symbol on the front of the first aid kit. A first aid kit is a special container or box that contains medical equipment and first aid supplies used to provide first aid in an accident or emergency. In the corner of the box, there are simple instructions or first aid lists that provide quick guidance for those using it. This information is useful to give brief directions on how to use the equipment at hand.

The scene begins when Regan starts her journey to the place where the music "Beyond the Sea" originated. While traveling, she finds an abandoned train. Regan entered the train and found a medicine box. Regan also wanted to take the box, because medicine was needed in conditions like this.

The first aid Symbol can be considered a symbol because it uses a simple, abstract representation to convey information about the location where first aid is available, based on conventions that exist in the community. This Symbol is a sign that shows a red cross (R) which Symbolizes first aid (O). The representamen (R) and object (O) have a relationship that produces an interpretant (I), which is a place for medicines and equipment that are useful for initial treatment when injured or sick. This Symbol has a conceptual meaning, the first aid kit is not only a physical object, but also contains meanings involving safety, readiness, social responsibility, skills, knowledge, order, and regularity in responding to accidents or emergencies.

4. Conclusion

Peirce's theory of Signs which has been mentioned before is based on the idea that Signs are triadic in nature, consisting of three components: the Sign (or representamen), the object, and

the interpretant. The Sign is the physical form of the Signifier, such as a word, image, or gesture. The object is the thing or concept to which the Sign refers, and the interpretant is the mental concept or meaning that the Sign evokes in the mind of the interpreter. Peirce classified Signs into three categories based on their relationship to their objects. The first is Icon: a Sign that resembles or imitates its object in some way, the second is Index: a Sign that is directly connected to its object by some causal or spatial relationship and the third is Symbol: a Sign that represents its object by convention or agreement. In conclusion, Peirce's theory of Signs offers a rich and nuanced framework for understanding how Signs function in language and thought. By emphasizing the triadic nature of Signs and the role of interpretation in the creation of meaning, Peirce's theory highlights the complexity and fluidity of semiotic processes.

Based on the research and discussion conducted in Chapter 3, it can be concluded that the various types of Signs found in the *movie A Quiet Place Part 2* have their respective meanings and functions. Following the theory used in this research, Signs have three types: Icon, Index, and Symbol. The theory used to analyze the meaning of Signs is Leech's theory which proposes a theory that identifies seven types of meaning, which are explained in his work, *The Study of Meaning* (1981). Leech provides seven types of meaning systems: conceptual meaning, connotative meaning, social meaning, affective meaning, reflective meaning, collocative meaning, and thematic meaning. This research focuses on the types of meanings of the Signs contained in the *movie A Quiet Place Part 2*. The total Signs found are 15 Signs which are divided into three parts, namely five Icons, five Indexes, and five Symbols. Each Sign has a different meaning according to the type and meaning based on the theory used. In this study, Icon data found in the movie *A Quiet Place Part 2* consists of maps, paintings, toys, stickers, and ice cream pictures. Index data consists of a burning house disaster, abandoned high heels, vehicle tire marks on the asphalt, a broken car windshield, and an expression of fear. The last, Symbol data consists of a Sign to calm down, a red light, a STOP Sign, an American flag, and a picture of first aid.

References

- Ainun, N. (2021). *Sign In Candy's Advertisement "Mentos" By Using Pierce's Perspective A Thesis*.
- Amalia, M. (2022). *Semiotics Analysis Of Disney Movie Posters Thesis*
- Antari, N.N.P., Rajistha, I.G.N.A., Warmadewi, A.A.I.M. (2023). *The Sign Found in The Movie "Mr Harrigan's Phone"*
- Chandler, D. (1994). *Semiotics for Beginners*
- Chandler, D. (2007). *Semiotics the Basics, Second Edition*.
- Creswell, J. W., & Creswell, J.D. (2018). *Research Design: Qualitative, Quantitative, and Mixed Methods Approaches*.
- Danesi, M. (2004). *Messages, Signs, and Meanings*.
- Hamidah, S. K., Priyawan, P., & Abqoriyyah, F. H. (2023). *Peirce's Triadic Analysis in the Script of "The Lord of the Rings: The Fellowship of The Ring" Film*.
- Leech, G. (1981) *Semantics the study of meaning*.
- Rahmaton, Fitrisia, D., & Nasir, C. (2023). *A Semiotic Analysis of the Hafalan Shalat Delisa Movie Using*.
- Rubi. (2023). *Movies As Mirrors of Politics: Reflecting Sociopolitical Realities on the Silver Screen*.
- Wiyogo, A. J., & Kumala, S. A. (2023). *Semiotics Analysis On The Novel Night On The Galactic Railroad By Miyazawa Kenji Using Charles Sanders Peirce's Triadic Model*